



Rio Rancho Art Association
P.O. Box 45445
Rio Rancho, NM 87174
www.rra-assoc.org

Officers and Chairs

- **President:** Rosario Correa
- **Vice President:** JoeMcDonnell
- **Secretary:** **STILL OPEN & NEEDED**
- **Treasurer:** Kandy Glaser
- **Membership:** Kandy Glaser
- **Hospitality:** Yolanda Howren & John Jones
- **Acting Venues Chair:** Kandy Glaser
- **Communications Chair:** Joe McDonnell
- **Member-at-Large:** Yolanda Howren & John Jones
- **Newsletter:** Joe McDonnell, 505-459-8050 - a.i.ahafnar@gmail.com

Venues Coordinators:

- **Lovelace:** Ginny Stallone 505-404-8772 & Rosario Correa
- **O'Hare's:** Ginnie Brown, 505-836-5814, Dallas Myers
- **Edward Jones Agency:** Mitzi Condit, 928-301-3638 - text OK, Rosario Correa & Ginny Stallone.
- **Albuquerque Little Theatre:** Phyllis & Tom Popp 505-890-5745, Nocha & Dallas Myers and Mary Strause
- **Milly's:** Ginnie Brown, 505-836-5814, Dallas Myers
- **Balanced Physical Therapy and Wellness:** Rosario Correa, 505-238-4046

VENUE COORDINATORS, WILL BRING VENUE'S SIGN UP SHEETS TO EACH MEETING

RRAA NEWSLETTER

VOL.25 ISSUE 7

July 8th, 2025 Meeting

RRAA Meetings are EVERY 2nd Tuesday of every month!

Place: Don Chalmers Ford Breakroom, 6:00 - 8pm

RRAA VENUES - Sign up at meeting or call venue coordinator

Albuquerque Little Theater

224 San Pasquale Ave SW

Coordinators: **Phyllis & Tom Popp, 505-890-5745**

No Rehangs, 15% charged on sales, 2 pieces of art per artist

June 25 is takedown for the Summer - 1:30pm

Show	In - 1:30pm	Out - 1:30pm
City of Angels	Aug. 27	Sept. 17
Manhatta	Oct. 1	Oct. 22
She Stoops to Conquer	Nov. 5	Nov. 26
Anastasia	Dec. 17	Jan.7, 2026
The Children's Hour	Jan. 28, 2026	Feb. 18, 2026
Anything Goes	Mar. 4, 2026	Mar. 25, 2026
Caesar & Cleopatra	Apr. 22, 2026	May 13, 2026
Company	June 10, 2026	July 1, 2026

Milly's Restaurant

7308 Jefferson St. NE, Albuquerque

Coordinator: **Ginnie Brown, 505-836-5814**

In/out on the same date, Rehang Once, 15% charged on sales

July 29, Sept. 23, Nov. 25 - 2:30pm,

O'Hare's Grill & Pub

4100 Southern Blvd, Rio Rancho

Coordinator: **Ginnie Brown, 505-836-5814**

Take down - July 12 - 8:00 am, No commission, No rehangs

Hang Sept. 13, Take down Nov 8, 8:00 am

Balanced Physical Therapy and Wellness:

240 South Camino del Pueblo, Suite G, Bernalillo

Coordinator: **Rosario Correa 505-238-4046**

In/out on the same date, Rehang Once, 2-3 pieces per artist

July 7, Oct. 6, 9am

Lovelace Westside Hospital

Coordinators: **Ginny Stallone, 505-404-8772 & Rosario Correa, 505-238-4046**

In/out on the same date, Rehang Once, No commission

Aug. 14, Oct. 16, Dec. 11 - 10:00 am

Edward Jones Coordinator: Mitzi Condit, 505-994-0250

In/out on the same date, Rehang Once

Aug. 8, Oct. 10, Dec. 12 - 9 am

\$10 hanging fee for all venues. Members, please remember to pay your

Our venues have specific requirements. Check with the coordinator if you have questions

Kandy Glaser is the Acting Venues Chairperson. Let Kandy know if you have not received a copy of the new guidelines.

Hanging Rules: Sign the sign up sheets available at each meeting. We can usually take 2 or 3 pieces per artist per venue; see coordinator for details. Even if you hang every time please use the sign up sheets at the meetings so we have an accurate count of the pieces. The hanging fee is \$10 per artist. There is a \$15 charge for art not picked up, and a \$5 charge if you sign up and do not show up. If you sell a piece at Lovelace, the buyer will call you and the two of you will arrange a time to meet there, exchange \$\$ for art, and you must hang a new piece in that space. **Please let the venue coordinator know this has taken place.** For all other venues you **may not remove a piece until takedown!**

Consume a sale at venue take-down time.

Please remember when we hang in hospitals and businesses it is important to make the least possible disruption. Please keep your voices down and socializing to a minimum (or outside the venue)!



RRAA Meeting Speakers

July meeting

- Lynn Patton will speak in July.
- Joseph MacKenzie will speak about Corrales activities and opportunities in August.
- Joe McDonnell will talk about framing in October.

Lynne Patton

Raised in Montana, Lynne learned to look closely at the surrounding landscape and appreciate the quality of light. She got her first set of oil paints from her father when she was 12 years old. He was a cattleman with a great appreciation for nature and beauty, whose mother studied with Charles Russell. He always encouraged Lynne's creativity. It was the beginning of a lifelong love of oil painting. Lynne earned her bachelor degree from Rocky Mountain College where she minored in art. In her work Lynne seeks to celebrate the beauty and the individuality to be found in the subjects of every-day life. Lynne has continued her art education at Pacific Northwest College of Art and studied with Sherrie McGraw and David Leffel, Robert Johnson, Johanne Mangi, Derek Penix, and Sara Siltala. She is a member of the Oil Painters of America, American Women Artists, Rio Grande Artists



NOTICE TO OUR MEMBERS

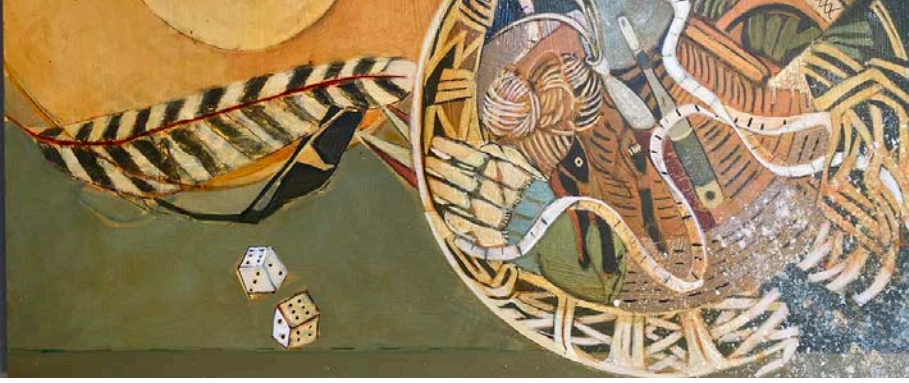
Per RRAA Venue Hanging Rules:

Please remember when we hang in BUSINESSES, it is important to make the LEAST POSSIBLE DISRUPTION!!!

We hang in these venues at the INVITATION and DISCRETION of the business owner or manager.

If we disrupt their business, we may lose that venue and you artists would have fewer places to show your art!

Unruly behavior at any of our venues will NOT be tolerated!



Member News

State Fair

Contact Ramona Vigil-Eastwood at
505-222-9738 for entry packet

MATERIAL WORLD

Saturday, July 5th -

Saturday, August 16th

Public reception:

**Saturday, July 5th 2:00 -
4:00 PM**

6500 Coors Blvd NW (at the
end of Bosque Meadows Road
between Montañito and Paseo
del Norte), Albuquerque, NM.

The Open Space Visitors
Center is part of the City of
Albuquerque's Parks and
Recreation Department. Hours:
Tuesday - Saturday, 9:00 AM -
5:00 PM.



**Call to artists with a
birthday in JULY.**

Please bring some
munchie to our meeting.

Check out our

RRAA membership cards.

Members showing our card
will receive a **10% discount**
at Artisans. Paid members
will receive their cards at the
venues, meetings, or mailed
upon request.

RRAA Members NOTICE!

Members, please pay your hanging fees for our venues, they are vital to the success of our association. Those members who do not pay may be dropped from the venue or association!

Also, please remember that if you sign up for a non-RRAA associated event, gallery or special hanging, you are responsible for fees, forfeitures or "no-Shows" and other special requirements from that event, gallery and/or group. RRAA will not pay for any fees that are connected to that event. No children at general meetings... Don Chalmers and RRAA have no insurance coverage in case of accidents. Please **DO NOT show up** at a hanging venue that you have not signed up for! We only have enough spaces for a set number of pieces and if you show up without reservations we chance dropping a member artist who has signed up. We want all of you to be represented but we have to go by the sign up sheets at each meeting or if unable to attend the meeting, call the venue coordinator and arrange to sign in with them.